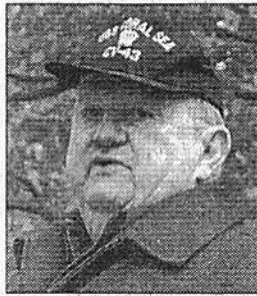


DUXBURY
CLIPPER
WED. 2/9/11
pg. 4

Joseph G. Shea, 72, Vietnam veteran



Joseph G. Shea, 72, of Duxbury, died suddenly on Jan. 31. He grew up in Jamaica Plain where he was granted access to the adult section of Boston Public Library Branch in Jamaica Plain after he read every book in the children's section.

Mr. Shea was a naval aviator who flew the A-1 Skyraider from the aircraft carriers U.S.S. Essex and U.S.S. Coral Sea, including missions over Vietnam early in the war and as a pilot instructor. He retired as a Commander in the US Navy, and went on to work for Delta Airlines, as captain for the Boeing 727, 757, and 767.

Mr. Shea was an avid reader and a self-taught historian. He loved to share his knowledge of history and devoured research materials for the pleasure of knowing and sharing. One of his proudest moments was researching and enabling the reconstruction of the WWI War Memorial in Duxbury.

As an active member of First Parish Church

in Duxbury, serving on many committees there. He was active on town committees through the years and while serving as Sealer of Weights and Measures authored a manual for the job, which was reproduced and distributed by the Commonwealth to all cities and towns. He was also a long serving member of the Highway Safety Committee and the Municipal Commission on Disabilities.

Mr. Shea was the husband of the late Jacqueline (Kress) and leaves his children, David and his wife Kathleen of Pembroke, Susan and her partner Nicci Meadow of Norwell and Andrew of Duxbury; his grandchildren, Ryan and Christopher Shea of Pembroke, Hayden Shea-Meadow of Norwell; his sister, Gerry Townsend of Florida; and many nieces and nephews.

A memorial service will be held Wednesday, Feb. 9 at First Parish Church, 842 Tremont St., Duxbury, MA at 2 p.m. Burial will be private.

In lieu of flowers, donations may be made to the Joseph G. Shea Memorial Fund c/o Rockland Trust Company, P.O. Box 1627, Duxbury, MA 02331. Funds will be used to support local scouts in need.